

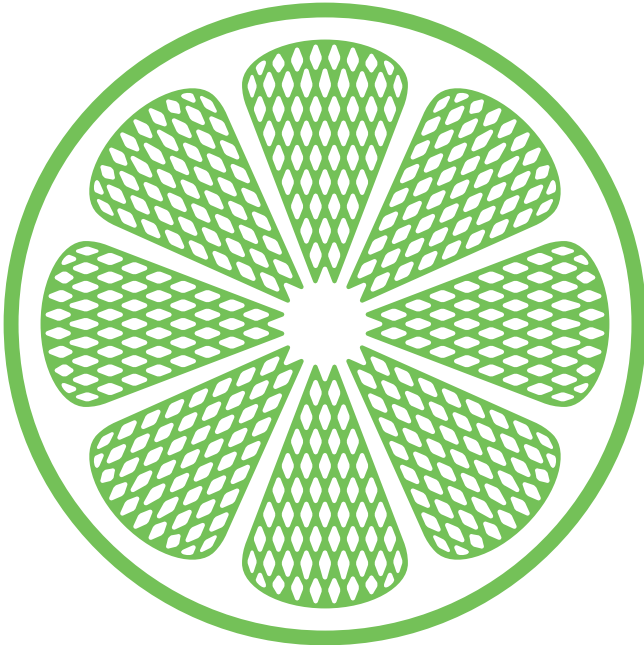
Pressure Washers Professional Line



IPC

IPC Integrated Professional Cleaning

IPC Integrated Professional Cleaning





IPC - Integrated Professional Cleaning - was formed in 2005 following the merger of a number of **leading companies** in the professional cleaning sector, each specialising in a different market segment.

A complex Group able to provide integrated global cleaning products.

Its size and international presence make IPC one of the world's leading groups manufacturing professional machines and equipment, with **a broad portfolio of prestigious products and brands** each with a different target customer and a constant commitment to research and innovation.

IPC places **customer satisfaction** at the centre of its activities, offering its services as the **ideal partner** for all cleaning sector operators.

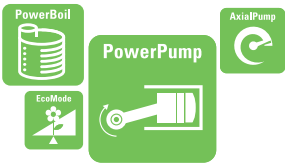
Research, innovation, product quality and a high standard of service and efficiency are the **fundamental elements in the Group's corporate culture**. Business spirit, a sense of belonging and reference to established best practices are universal values, a common asset centred on the **value of the individual**, the true point of reference for the entire corporate system.

The Group's logo, a section of a technological lime, represents the natural link with the idea of cleanliness and a reference to the **constant drive towards research and innovation**. It visually and symbolically identifies IPC characteristic values of a sense of belonging, strength and innovation.

IPC: a universe of "Easy Innovation".



Contents



IPC Professional Pressure Washers

page 4



IPC new range of high efficiency pumps

page 6



IPC boilers: reliability and toughness guaranteed

page 7



Cold water high pressure washers

page 8



Hot water high pressure washers

page 32



Professional fixed pressure washers

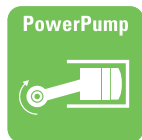
page 58

IPC Professional High Pressure Washers

The new range for professional users

IPC presents its new range of hot and cold water high pressure washers.

IPC introduces its new range of Professional High Pressure Washers with advanced ergonomic features and covers in the corporate green colours of IPC Group. The high performance is guaranteed by the top quality long-life components and decades of experience in the sector. Performance is guaranteed by the following features which place IPC high pressure washers at the top of the professional range:



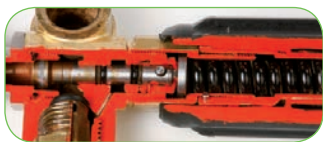
Power Pump: the main characteristics of the new IPC crankshaft pumps are top performance, excellent resistance to thermal shock, a long working life and ease of maintenance.



Axial Pump: made from top quality materials with steel or ceramic pistons and light alloy or brass heads (according to model), excellent performance with low vibrations and noise levels.



Power Boil: IPC latest high efficiency boilers. Designed for a long working life, the cylinders and internal components are made entirely from stainless steel. The double pass coils are made from special corrosion and oxidation resistant steel tubing.



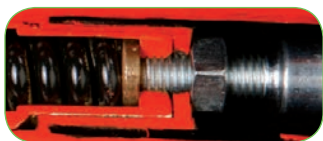
By-pass system: when the trigger gun is closed, water is circulated in the pump. The thermostatic valve is often used in combination with this system in the case of very long by-pass periods to avoid excessively high water temperatures which might otherwise ruin components of the pump.



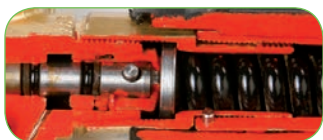
Control system I - Immediate Total Stop: this remote control shuts the machine down when the trigger gun is closed.



Control system D - Delayed Total Stop: this safety system shuts the machine down after 30" of inactivity and restarts it automatically as soon as the trigger gun is activated.



Control System ITS - Intelligent Total Stop: this safety system shuts the machine down after 10" of inactivity and restarts it automatically as soon as the trigger gun is activated. After 18' of inactivity, the system shuts the machine down completely. It also warns if the water circuit is leaking or the fuel or water softener has run out.



Control system ST - "Safety-Stop" shuts the machine down after 3' of inactivity or definitively in the event of leaks in the water circuit and/ or no water.



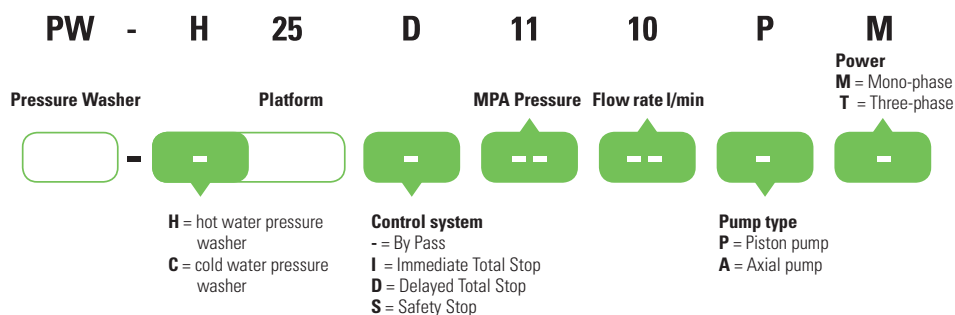
Electric Induction Motors, 4-pole (1400 rpm) or 2-pole (2800 rpm), air cooled, continuous duty, protected with thermal cutout. Maintenance free.



Eco Mode: this special temperature regulation mode maintains a high level of performance while drastically reducing emissions and fuel consumption.

Reading guide to IPC pressure washers nomenclature

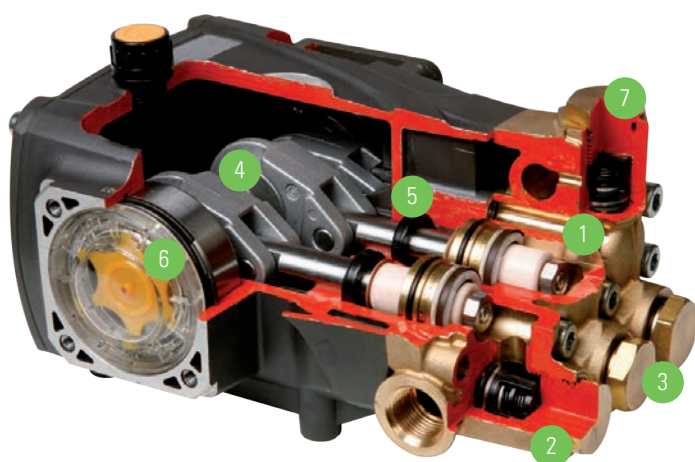
IPC pressure washers nomenclature allows an easy and fast identification of the main technical characteristics of each model. Following an example on PW-H25 D1110P M pressure washer:



IPC new range of high efficiency pumps

IPC presents its new range of even more reliable and efficient crankshaft pumps

IPC has introduced a new component to maximise the cleaning performance of its professional hot and cold water high pressure washers. In-depth research has produced top results in terms of performance, long life and low maintenance costs.



1 Large extra-hard ceramic pistons (5 mm thick) for high resistance to wear and thermal shock.



2 Stainless steel high efficiency intake valves.



3 Brass head with high mechanical resistance for a long working life.



4 Reinforced connecting rods in special alloys or bronze (depending on model).



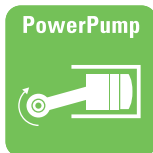
5 High quality oversized bearings for a long life.



6 Large oil level indicator lights.



7 Pump structure designed for easy quick maintenance.



- Thanks to the double seal (high/low pressure) and intermediate chamber, the pumping system remains cool and any leaks caused by worn seals are re-circulated.

Advantages

- Small pump.
- Laboratory tested for thousands of hours.
- 100% ceramic large diameter pistons.
- Connecting rods with a greater surface area made from aluminium or bronze alloy (depending on model).
- Large diameter oil light.
- Forged steel shaft.
- Separate By Pass.

Benefits

- Optimisation of the size of the high pressure washer.
- Ensures a long system working life.
- Excellent resistance to wear and thermal shock.
- Improved load distribution for optimum operation in all conditions.
- Excellent oil level visibility to simplify maintenance.
- High resistance to wear and a long working life.
- The ideal solution to reduce maintenance times and costs.

IPC boilers: reliability and toughness guaranteed

A long working life with the IPC guarantee

The latest IPC boilers are the result of the vast experience and professional expertise of IPC R&D department.

Excellent performance is guaranteed by the use of top quality materials. The two cylinders and all external components are made from stainless steel, while the double pass coils are made from special corrosion and oxidation resistant steel tubing.



1 Exhaust, stainless steel outer and inner cylinder with plasma welding: **oxidation free** and a longer working life.



2 Input-output couplings with **o-rings** for a better guarantee of tightness.



3 New **interchangeable bottom**, made of refractory and non-toxic material.



4 Double coil made of steel tube available with different features and specific uses.



5 Ignition group with light alloy flange and ceramic coated electrodes designed by IPC to **optimise combustion**.



- The inlet and the outlet on the bottom, help to keep coils clean from stagnant water. The bottom, made of refractory and non-toxic material, doesn't emit residues harmful for health and environment and is interchangeable.

Advantages

- Maximum safety.
- Low running costs.
- Long working life.
- Low maintenance costs.
- Materials and processes guaranteed and certified.

Benefits

- All IPC boilers pass stringent testing.
- IPC boilers are high efficiency with low diesel consumption and reach temperature very rapidly.
- The entire structure is made from stainless steel, immune to rust and/or corrosion.
- Rapid dismantling of components.
- All production takes place in IPC own factories.

Cold water high pressure washers

The IPC family of high pressure washers is designed to deliver maximum performance and cover the widest possible range of applications in all areas of use. IPC unique range of cold water high pressure washers comes in two distinct families. The small, vertical models are equipped with axial pumps and are specially designed for the semi-professional market where the ability to withstand regular heavy-duty daily use is not required but excellent performance and complete reliability are essential. The medium to large models on the other hand are equipped with the exclusive "IPC Power Pump" crankshaft pump and are specially designed for professional use in even the most demanding applications.

PW-C10 page 10



Sectors	
Gardening	●●●●●○○○○
Automotive	○○○○○○○○○○
DIY	●●●●●○○○○
Hardware	○○○○○○○○○○
Industry	○○○○○○○○○○
Utilization x day	
h 0 8	



PW-C23 page 12



Sectors	
Gardening	●●●●●○○○○
Automotive	○○○○○○○○○○
DIY	●●●●●○○○○
Hardware	●●●●●○○○○
Industry	○○○○○○○○○○
Utilization x day	
h 0 8	



PW-C25 page 14



Sectors	
Gardening	●●●●●○○○○
Automotive	○○○○○○○○○○
DIY	●●●●●○○○○
Hardware	●●●●●○○○○
Industry	●●●●●○○○○
Utilization x day	
h 0 8	



PW-C90 page 16



Sectors	
Agriculture	●●●●●○○○○
Automotive	○○○○○○○○○○
Building	●●●●●○○○○
Hardware	○○○○○○○○○○
Industry	●●●●●○○○○
Utilization x day	
h 0 8	



PW-C40 page 18



Sectors	
Agriculture	●●●●●○○○○
Automotive	○○○○○○○○○○
Building	●●●●●○○○○
Hardware	○○○○○○○○○○
Industry	●●●●●○○○○
Utilization x day	
h 0 8	



PW-C50 page 20



Sectors	
Agriculture	●●●●●●●●●●
Automotive	●●●●●●●●●●
Building	●●●●●●●●●●
Hardware	●●●●●●●●●●
Industry	●●●●●●●●●●
Utilization x day	
h 0 8	





PW-C70 page 22



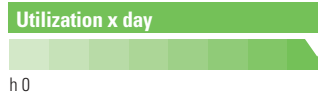
Sectors	
Agriculture	●●●●●●●●
Automotive	●●●●●●●●
Building	●●●●●●●●
Hardware	●●●●●●●●
Industry	●●●●●●●●



PW-C80 page 24



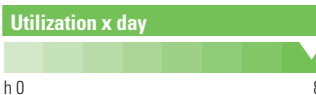
Sectors	
Agriculture	○●○●○●○●
Automotive	●●●●●●●●
Building	●●●●●●●●
Hardware	○●○●○●○●
Industry	●●●●●●●●



ABSOLUTE page 26



Sectors	
Agriculture	○●○●○●○●
Automotive	●●●●●●●●
Building	●●●●●●●●
Hardware	○●○●○●○●
Industry	●●●●●●●●



BENZ page 28



Sectors	
Agriculture	○●○●○●○●
Automotive	●●●●●●●●
Building	●●●●●●●●
Hardware	○●○●○●○●
Industry	●●●●●●●●



FIRE BOX page 30



Sectors	
Agriculture	●●●●●●●●
Automotive	○●○●○●○●
Building	●●●●●●●●
Hardware	○●○●○●○●
Industry	●●●●●●○●



Cold water high pressure washer

PW-C10



HOSE REEL
Standard low pressure professional hose reel, enables the hose to be stored simply and quickly, protects it from all damage and keeps it close at hand at all times (plus versions).



0,5 litre foam lance



5 m H.P. hose
(6,5 m PLUS Version)



Trigger gun with twist prevention device and safety lock safety system.



Turbo lance and lance with spray angle adjustment.



Ergonomic and robust of handle for an easy and comfortable transport.



Lance, trigger gun and hose reel supports fitted as standard to keep everything within reach at all times.



The large diameter wheels and wide tread give the machine great stability while at the same time making it easy to move.



Standard low pressure professional hose reel, enables the hose to be stored simply and quickly, protects it from all damage and keeps it close at hand at all times (plus versions).



Transparent quick coupling for filling the machine, with filter.

Technical characteristics

- **AUTOMATIC TOTAL STOP**

The machine goes off automatically when the trigger gun is released. Increases the life of the pump.

- **LONG LIFE ALLUMINIUM PUMP**

Axial pump with aluminum alloy head.

- **STAINLESS STEEL PISTONS**

Pistons with excellent mechanical characteristics.

- **UNIVERSAL MOTOR**

Ultra-light with copper windings for easy movement.

- **THERMAL CUTOUT**

The motor is protected from excessively high temperatures by a thermal cutout.

Code	Model	Remote control	Pressure (bar)	Flow rate (l/h)	Voltage (Ph-V-Hz)	Absorbed power (kW)	RPM	Electric cable (m)	Hose (m)	Weight (Kg)	Dimensions (cm)
IDAF 94218	PW-C10 I1306A-M	Total Stop	130	370	1-230-50	1,7	-	5	5	11	33x30x73
IDAF 94219	PW-C10P I1306A-M	Total Stop	130	370	1-230-50	1,7	-	5	6,5	11	33x30x73



Cold water high pressure washer

PW-C23



Standard professional hose reel where it is possible to wind easily and rapidly the hose in order to protect it from any damage (plus version).



8 m H.P. hose with screw coupling (12m PLUS Version)



Gun with athermic extension



Lance with adjustable head and Turbo nozzle



Thanks to the particular chemical injection system and the two tanks of this machine, it is possible to deliver and adjust the quantity of two different detergents.



The starting handgrip, the detergent tap and the inlet water connection are placed on the front side of machine.



With a simple lever placed next to the hose reel, the hose can be blocked at the desired lengths.



Standard supports for gun, lance and lance with rotating nozzle to have them ready to be used.



Thanks to electric cable reel, it is possible to rewind the feeding cable when working operations are finished.

Technical characteristics

- **AUTOMATIC TOTAL STOP**

The machine goes off automatically when the trigger gun is released. Increases the life of the pump.

- **PUMP**

Axial pump with head in aluminium or brass in AO models.

- **STAINLESS STEEL PISTONS**

Pistons with excellent mechanical characteristics.

- **MOTOR**

Electric induction motor, two pole, continuous duty. Maintenance free.

- **THERMAL CUTOUT**

The motor is protected from excessively high temperatures by a thermal cutout.

- **GAUGE (PW-C23 PI1508AO-M / PI1610AO-M)**

Professional gauge to constantly check the working pressure.

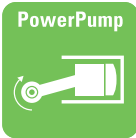
Code	Model	Remote control	Pressure (bar)	Flow rate (l/h)	Voltage (Ph-V-Hz)	Absorbed power (kW)	Max water inlet temp. (°C)	Hose (m)	Electric cable (m)	Weight (Kg)	Dimensions (cm)
IDAF 94220	PW-C23 I 1307A-M	Total Stop	130	390	1-230-50	1,9	50	8	5	16	38x33x84
IDAF 94222	PW-C23 I 1408 A-M	Total Stop	140	460	1-230-50	2,3	50	8	5	18,5	38x33x84
IDAF 94224	PW-C23 I 1508 A-M	Total Stop	150	500	1-230-50	2,5	50	8	5	22	38x33x84
IDAF 94226	PW-C23 I 1610 A-M	Total Stop	160	600	1-230-50	3	50	8	5	23	38x33x84
IDAF 94228	PW-C23 I 1508 AO-M	Total Stop	150	500	1-230-50	2,5	50	8	5	23	38x33x84
IDAF 94230	PW-C23 I 1610 AO-M	Total Stop	160	600	1-230-50	3	50	8	5	24	38x33x84

All versions are also available in the Plus version which, as well as the standard accessories, also includes 12 m H.P. hose with screw coupling and hose reel.



Cold water high pressure washer

PW-C25



Standard professional hose reel where it is possible to wind easily and rapidly the hose in order to protect it from any damage (plus version).

The motor and the pump are in a horizontal position, for a great stability and ease of movements.



8m hose with screw coupling
CodE TBAP 28305



Trigger gun with heatproof
extension and swivel coupling
Code IPPR 40010.



Lance with adjustable head
Code LCPR 40057
(IDAF 94177 - IDAF 94166
IDAF 94168)
Code LCPR 40046
(IDAF 94181 - IDAF 94169)



Removable transparent cover for an easy and rapid maintenance.



The starting handgrip, the detergent tap and the inlet water connection are placed on the front side of machine.



With a simple lever placed next to the hose reel the hose can be blocked at the desired length (plus models).



Standard supports for gun, lance and lance with rotating nozzle to have them ready to be used.



Lance support as standard.

Technical characteristics

- MOTOR**

Asynchronous motor, 2-pole (2800 rpm), class S1 (continuous duty).
4-pole (1400 rpm) 1310 P4 models.

- PUMP**

IPC pump with separate by-pass, complete with pressure adjustment knob to adapt the pressure to the surface to be washed.

The motor and pump are mounted horizontally, while the structure is vertical. This improves the stability and manoeuvrability of the machine, which also occupies less space, even when stored, maintaining the natural working position of the pump-motor group at all times.

- PRESSURE GAUGE**

Professional pressure gauge to monitor work pressure at all times.

- STRONG STRUCTURE** that is resistant to thermal shocks, atmospheric agents and chemical corrosion.

Code	Model	Remote control	Pressure (bar)	Flow rate (l/h)	Voltage (Ph-V-Hz)	Absorbed power (kW)	Motor (Hp)	RPM	Chemical tank (l)	Weight (Kg)	Dimensions (cm)
IDAF 94177	PW-C25 1509P-M	By Pass	150	540	1-230-50	3	3	2800	3	30	49x40x93
IDAF 94166	PW-C25 11509P-M	Total Stop	150	540	1-230-50	3	3	2800	3	30	49x40x93
IDAF 94181	PW-C25 1813P-T	By Pass	180	800	3-400-50	5	5,5	2800	3	30	49x40x93
IDAF 94169	PW-C25 11813P-T	Total Stop	180	800	3-400-50	5	5,5	2800	3	30	49x40x93
IDAF 94168	PW-C25 11310 P4-M	Total Stop	130	600	1-230-50	3	3	1400	3	30	49x40x93

All versions are also available in the Plus version which, as well as the standard accessories, also includes 12 m H.P. hose with screw coupling, gun with athermic extension and Swivel, lance with adjustable head, lance with turbo nozzle and hose reel.



Cold water high pressure washers

PW-C90



HOSE REEL with 15 m H.P. flexible hose (standard accessories in PLUS models).

LANCE WITH ADJUSTABLE HEAD for high/low pressure switching and jet angle adjustment.



H.P. flexible hoses 10 m
Code TBAP 25324



Handgrip
Code IPPR 40007



Lance
Code LCPR 93804



New IPC pump with brass head and ceramic pistons.



Pressure adjustment knob.



Built-in cable reel support.



Detergent tank.



Built-in lance holder to keep everything with reach at all times.

Technical characteristics

MOTOR

- Asynchronous motor, 2-pole, class S1 (continuous duty) for three-phase models and models PW-C90 1615 P T - 1913 P T.
- Asynchronous motor, 4-pole, class S1 (continuous duty) for single-phase models and model PW-C90 1915 P T.
- Pump-motor connection with anti-vibration coupling for low vibrations, improves the reliability and working life of all mechanical components for models 1915P T - D1915P M.

- Built-in ergonomic handle, lance holder and hose support. The machine also has a cable support.
- Built-in 7.5 litre detergent tank for low pressure detergent delivery.

ACCESSORIES

- Trigger gun with swivel in all versions. Avoids irritating twisting of the hose.
- H.P. hose with screw couplings.

DESIGN

- Sturdy forged aluminium alloy frame and large diameter wheels.

Code	Model	Remote control	Pressure (bar)	Flow rate (l/h)	Voltage (Ph-V-Hz)	Absorbed Power (kW)	Motor (Hp)	RPM	Detergent tank (l)	Weight (Kg)	Dimensions (cm)
■ IDAF 40299	PW-C90 1112P M	By Pass	30÷110	320÷720	1-230-50	3,2	3	1400	7,5	46	73x48x88
● IDAF 40303	PW-C90 1310P M	By Pass	30÷130	300÷600	1-230-50	3,2	3	1400	7,5	46	73x48x88
■ IDAF 40307	PW-C90 1615P T	By Pass	30÷160	450÷900	3-400-50	5,1	5,5	2800	7,5	46	73x48x88
▲ IDAF 40311	PW-C90 1913P T	By Pass	30÷190	400÷800	3-400-50	5,1	5,5	2800	7,5	46	73x48x88
■ IDAF 40315	PW-C90 1915P T	By Pass	30÷190	450÷900	3-400-50	5,4	6	1400	7,5	47	73x48x88
■ IDAF 40300	PW-C90 D1112P M	Total Stop D	30÷110	320÷720	1-230-50	3,2	3	1400	7,5	46	73x48x88
● IDAF 40304	PW-C90 D1310P M	Total Stop D	30÷130	300÷600	1-230-50	3,2	3	1400	7,5	46	73x48x88
■ IDAF 40308	PW-C90 D1615P T	Total Stop D	30÷160	450÷900	3-400-50	5,1	5,5	2800	7,5	46	73x48x88
▲ IDAF 40312	PW-C90 D1913P T	Total Stop D	30÷190	400÷800	3-400-50	5,1	5,5	2800	7,5	46	73x48x88
■ IDAF 40316	PW-C90 D1915P T	Total Stop D	30÷190	450÷900	3-400-50	5,4	6	1400	7,5	47	73x48x88

All versions are also available in the Plus version which, as well as the standard accessories, also includes hose reel, turbo nozzle and 15 m H.P. hose.

Recommended optional accessories



Sandblaster kit M22



Sand bag 50kg
Code PRCH 00065



Fixed hydro-brush lance
Code SPID 24939



Mudguard lance
Code LCPR 29360



Drain Kit 10 m
Code TBAP 23853



Lance for washing floors
Code LCLC 49492 ●
Code LCLC 49493 ▲
Code LCLC 49494 ■



Foam head
Code LCPR 24937



Cold water high pressure washers

PW-C40



HOSE REEL with 15 m H.P. hose (optional accessory, standard in Plus models)



LANCE HOLDER
Built-in lance holder.



H.P. flexible hose 10 m
CodeTBAP 25324



Trigger gun with Swivel joint
Code IPPR 40010



Lance
Code LCPR 40046
(IDAF 40238 - IDAF 40237 - IDAF 40241
IDAF 40242 - IDAF 40253 - IDAF 40254)
Code LCPR 40047
(IDAF 40250 - IDAF 40249)
Code LCPR 40048
(IDAF 40245 - IDAF 40246)
Code LCPR 40049
(IDAF 40233 - IDAF 40234)



Pressure adjustment knob.



Built-in 7.5 litre detergent tank for low pressure detergent delivery.



Large diameter wheels to facilitate movement.



ON/OFF knob.



Large front foot for greater stability.

Technical characteristics

MOTOR

- Asynchronous motor, 2-pole, class S1 (continuous duty) in models 1310P and 1813P
- Asynchronous motor, 4-pole, class S1 (continuous duty) in models 1310P4 - 1112P4 - 1813P4 - 1915P4.

DESIGN

- Sturdy frame and large diameter wheels.
- Built-in ergonomic handle, lance holder and hose support.
- The machine also has a cable support.
- Thermostatic valve (By Pass versions only) to protect the pump from excessively high water temperatures during the By Pass phase.

Code	Model	Remote control	Pressure (bar)	Flow rate (l/h)	Voltage (Ph-V-Hz)	Absorbed Power (kW)	Motor (Hp)	RPM	Detergent tank (l)	Weight (Kg)	Dimensions (cm)
● IDAF 40233	PW-C40 1310P M	By Pass	130	600	1-230-50	3,3	3	2800	7,5	44	74x43x81
▲ IDAF 40237	PW-C40 1813P T	By Pass	180	800	3-400-50	4,7	5,5	2800	7,5	44	74x43x81
■ IDAF 40241	PW-C40 1112P4 M	By Pass	110	720	1-230-50	3,2	3	1400	7,5	44	74x43x81
● IDAF 40245	PW-C40 1310P4 M	By Pass	130	600	1-230-50	3,1	3	1400	7,5	44	74x43x81
▲ IDAF 40249	PW-C40 1813P4 T	By Pass	180	800	3-400-50	4,7	6	1400	7,5	44	74x43x81
■ IDAF 40253	PW-C40 1915P4 T	By Pass	190	900	3-400-50	5,1	6	1400	7,5	44	74x43x81
● IDAF 40234	PW-C40 I1310P M	Total Stop I	130	600	1-230-50	3,3	3	2800	7,5	44	74x43x81
▲ IDAF 40238	PW-C40 I1813P T	Total Stop I	180	800	3-400-50	4,7	5,5	2800	7,5	44	74x43x81
■ IDAF 40242	PW-C40 D1112P4 M	Total Stop D	110	720	1-230-50	3,2	3	1400	7,5	44	74x43x81
● IDAF 40246	PW-C40 D1310P4 M	Total Stop D	130	600	1-230-50	3,1	3	1400	7,5	44	74x43x81
▲ IDAF 40250	PW-C40 D1813P4 T	Total Stop D	180	800	3-400-50	4,7	6	1400	7,5	44	74x43x81
■ IDAF 40254	PW-C40 D1915P4 T	Total Stop D	190	900	3-400-50	5,1	6	1400	7,5	44	74x43x81

All versions are also available in the Plus version which, as well as the standard accessories, also includes hose reel, turbo nozzle and 15 m H.P. hose.

Recommended optional accessories



Sandblaster kit



Sand bag 50 kg
Code PRCH 00065



Fixed hydro-brush lance
Code SPID 24939



Mudguard lance
Code LCPR 29360



Drain Kit 10 m
Code TBAP 23853



Lance for washing floors
Code LCLC 49492 ●
Code LCLC 49493 ▲
Code LCLC 49494 ■



Foam head
Code LCPR 24937



Cold water high pressure washers

PW-C50



HOSE REEL
Standard accessory in plus versions.



ERGONOMIC handle with lance holder, cable support and hose support to keep everything within reach at all times.



H.P. flexible hose 10 m
Code TBAP 25324



Trigger gun with Swivel joint
Code IPPR 40010



Lance
Code LCPR 40050 (IDAF 40264 - IDAF 40265)
Code LCPR 40047 (IDAF 40260 - IDAF 40261)
Code LPRC 40056 (IDAF 40268 - IDAF 40270)



Pressure adjustment knob.



Built-in detergent tank.



Large diameter wheels to facilitate movement.



ON/OFF knob.



Sturdy painted steel frame.

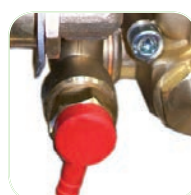
Technical characteristics

MOTOR

- Asynchronous motor, 4-pole, class S1 (continuous duty).

DESIGN

- Sturdy shockproof structure, resistant to thermal shock and adverse weather conditions.
- Professional pressure gauge to monitor work pressure at all times.



THERMOSTATIC VALVE

- To protect the pump from high temperatures in the By Pass phase.

Code	Model	Remote control	Pressure (bar)	Flow rate (l/h)	Voltage (Ph-V-Hz)	Absorbed Power (kW)	Motor (Hp)	RPM	Detergent tank (l)	Weight (Kg)	Dimensions (cm)
IDAF 40260	PW-C50 2117P T	By Pass	210	1000	3-400-50	6,4	7,5	1400	4	67	77x51x88
IDAF 40264	PW-C50 1718P T	By Pass	170	1100	3-400-50	6,2	7,5	1400	4	67	77x51x88
IDAF 40268	PW-C50 1622P T	By Pass	160	1300	3-400-50	6,2	7,5	1400	4	67	77x51x88
IDAF 40261	PW-C50 D2117P T	Total Stop D	210	1000	3-400-50	6,4	7,5	1400	4	67	77x51x88
IDAF 40265	PW-C50 D1718P T	Total Stop D	170	1100	3-400-50	6,2	7,5	1400	4	67	77x51x88
IDAF 40270	PW-C50 D1622P T	Total Stop D	160	1300	3-400-50	6,2	7,5	1400	4	67	77x51x88

All versions are also available in the Plus version which, as well as the standard accessories, also includes hose reel, turbo nozzle and 15 m H.P. hose.

Recommended optional accessories



Sandblaster kit



Sand bag 50kg
Code PRCH 00065



Fixed hydro-brush lance
Code SPID 24939



Drain Kit
10 m Code TBAP 23853
20 m Code TBAP 24406



Plunged ejector device
Code KTRI 29366

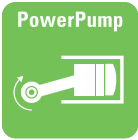


Hydro-brush lance
Code SPID 24911



Cold water high pressure washers

PW-C70



HANDLE
Sturdy ergonomic handle for convenient easy manoeuvring.



HOSE REEL
Manual hose reel, enabling the hose to be stored simply, protecting it from all damage.



H.P. flexible hose 15 m
Code TBAP 40013



Handgrip
Code IPPR 40010



Double lance Inox PD 70
Code LCPR 12983



Pressure can be adjusted from the machine. Pressure adjustment knob enables pressure to be adapted to the various cleaning needs.



Detergent tank holding 25 litres.



Single knob for switching the machine ON and OFF and adjusting the amount of detergent.



The large diameter wheels, wide tread and swivelling wheel with brake give the machine great stability while at the same time making it easy to move.



The cable reel enables the power cable to be stored tidily at the end of work.

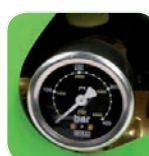
Technical characteristics

MOTOR

- Electric motor, 4-pole, 1400 rpm, continuous duty with double bearing and thermal cutout. Extends the working life of mechanical components.
- Pump-motor connection with anti-vibration coupling for low vibrations, improves the reliability and working life of all mechanical components.

ACCESSORIES COMPARTMENTS

- Useful convenient accessories compartments for trigger gun, lance and lance with rotating nozzle to keep them tidy and ready for use.



PRESSURE GAUGE

- Professional pressure gauge to monitor work pressure at all times.

Code	Model	Remote control	Pressure (bar)	Flow rate (l/h)	Voltage (Ph-V-Hz)	Absorbed Power (kW)	Motor (Hp)	RPM	Detergent tank (l)	Weight (Kg)	Dimensions (cm)
• IDAF 40319	PW-C70 D2021P T	Total Stop D	200	1260	3-400-50	9,5	9,5	1400	25	95	82x48x87
■ IDAF 40321	PW-C70 D2517P T	Total Stop D	250	1000	3-400-50	9,5	9,5	1400	25	95	82x48x87

Recommended optional accessories



Lance with double nozzle holder
Code LCPR 24906



Flexible hose
15 m Code TBAP 16654
20 m Code TBAP 16655



Feeding kit
Code KTRI 29378
Code KTRI 29377



Mudguard lance
Code LCPR 29360



Rotating hydro-brush lance
Code SPID 24911



Foam head
Code LCPR 24937



Extension P70 Sandblaster
Code LCPR 13557
Code LCPR 14858



Cold water high pressure washers

PW-C80



Easy access to all internal components to simplify maintenance.

STURDY STRUCTURE
Sturdy painted steel frame with stainless steel protection.



Lance
Code LCLC 42786 (IDAF 40525)




H.P. flexible hose 10 m
Code TBAP 25324
Code TBAP 40104 (IDAF 40525)



Handgrip
Code IPPR 40010



Double lance Inox PD 70
Code LCPR 12983



Handgrip
Code IPIP 40010 (IDAF 40525)



Easy handling on every kind of surface (concrete, dirt tracks, gravel, etc.) thanks to the excellent weight distribution and ergonomic handle.



Two large diameter tyred wheels with wide tread, ideal for moving the machine on all types of surface.



ON/OFF knob.



Steel load-bearing structure designed to absorb all vibrations generated by the machine.



Provided with lance holder.

Technical characteristics

MOTOR

- Asynchronous, continuous duty, 1400 rpm. Guarantees the mechanical components a long and maintenance free working life. Protected with thermal cutout.
- Pump-motor connection with anti-vibration coupling for low vibrations, improves the reliability and working life of all mechanical components.



THERMOSTATIC VALVE

- Thermostatic valve to protect the pump from possible overheating of the water during by-pass phase.

Code	Model	Remote control	Pressure (bar)	Flow rate (l/h)	Voltage (Ph-V-Hz)	Absorbed Power (kW)	Motor (Hp)	RPM	Detergent tank (l)	Weight (Kg)	Dimensions (cm)
IDAF 40273	PW-C80 1922P T	By Pass	190	1300	3-400-50	8,5	9	1400	-	83	103x70x72
IDAF 40275	PW-C80 2122P T	By Pass	210	1300	3-400-50	9,5	10	1400	-	83	103x70x72
IDAF 40277	PW-C80 2517P T	By Pass	250	1000	3-400-50	9,5	10	1400	-	83	103x70x72
IDAF 40274	PW-C80 D1922P T	Total Stop D	190	1300	3-400-50	8,5	9	1400	-	83	103x70x72
IDAF 40276	PW-C80 D2122P T	Total Stop D	210	1300	3-400-50	9,5	10	1400	-	83	103x70x72
IDAF 40278	PW-C80 D2517P T	Total Stop D	250	1000	3-400-50	9,5	10	1400	-	83	103x70x72
IDAF 40525	PW-C80 D3515P T	Total Stop D	350	900	3-400-50	11	15	1400	-	115	117x67x70

Recommended optional accessories (1922 - 2122 - 2517 models)



Lance with double nozzle holder
Code LCPR 24906



Flexible hose
15 m Code TBAP 16654
20 m Code TBAP 16655



Mudguard lance
Code LCPR 29360



Hydro-brush lance
Code SPID 24911



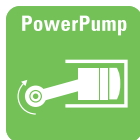
Hose reel kit
Code KTRI 37674



Foam head
Code LCPR 24937



ABSOLUTE



FRAME in 40 dia. steel with stainless steel covers.



The low voltage controls guarantee maximum user safety.



Nozzle for lance
Code UGLN 07790 (IDAF 40349)
Code UGLN 05200 (IDAF 40350)
Code UGLN 40002 (IDAF 40351 - Nozzle sapphire)



H.P. flexible hoses 15 m
Code TBAP 40054 (IDAF 40349)
Code TBAP 40050 (IDAF 40350 - IDAF 40351)



Handgrip
Code IPPR 40006 (IDAF 40349)
Code IPPR 40005 (IDAF 40350 - IDAF 40351)



Lance P70
Code LCPR 40028 (IDAF 40349)
Code LCPR 40026 (IDAF 40350 - IDAF 40351)



Pump-motor connection with anti-vibration coupling for low vibrations, improves the reliability and working life of all mechanical components.



Thermostatic valve to protect the pump from possible overheating of the water.



High capacity self-cleaning filter.



The machine is fitted with two lance holders and hooks for safe lifting.



Easy handling on every kind of surface (concrete, dirt tracks, gravel, etc.) thanks to the excellent weight distribution, ergonomic handle and large diameter wheels.

Technical characteristics

- Remote controlled "Safety-Stop" (ST) shuts the machine down after 3' of inactivity or definitively in the event of leaks in the water circuit and/or no water.
- The pump and motor are easy to disconnect for all maintenance.
- 15 m power cable.
- Stainless steel By Pass device (model LS 7365).
- Electric motor: asynchronous, continuous duty, 1400 rpm with automatic Y/Δ ignition.
- H.P. crankshaft pump: high performance, mechanical components with low working temperature; low noise levels, brass head for a long working life, ceramic pistons, high resistance to wear.
- Button to fill the water circuit manually with anti-freeze fluid to avoid the devices freezing if the machine is left outside.

Code	Model	Remote control	Pressure (bar)	Flow rate (l/h)	Voltage (Ph-V-Hz)	Absorbed Power (kW)	Motor (Hp)	RPM	Detergent tank (l)	Weight (Kg)	Dimensions (cm)
● IDAF 40349	ABSOLUTE-C S2041P T	Safety Stop ST	200	2500	3-400-50	15	20	1450	-	230	120x70x100
▲ IDAF 40350	ABSOLUTE-C S3521P T	Safety Stop ST	350	1300	3-400-50	15	20	1450	-	230	120x70x100
▲ IDAF 40351	ABSOLUTE-C S5015P T	Safety Stop ST	500	1000	3-400-50	15	20	1450	-	230	120x70x100

Recommended optional accessories



Rotating lance 500b
Code LCPR 40031



Hose couplings
Code RCIN 40011
Code RCIN 40012



● Extension P70 Sandblaster head
▲ Code LCPR 40042



Sand bag 50kg
Code PRCH 00065



Rotating lance P70
Code LCPR 40032



Rotating lance P70
Code LCPR 40033

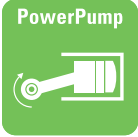


Drain Kit 5/16
10 m Code TBAP 40070 - TBAP 40072
15 m Code TBAP 40071 - TBAP 40073



Cold water high pressure washers

BENZ



PETROL
MOTOR



BENZ-C H1811Pi P



BENZ-C H2013Pi P



BENZ-C L2021Pi P



BENZ-C L DL2217Pi P



Extension P70
Code LCPR 40013



Flexible hose 10 m
Code TBAP 25324



Handgrip
Code IPPR 89429



Nozzle for lance
Code UGLN 05199 (IDAF 40356 - IDAF 40358)
Code UGLN 49990 (IDAF 40352 - IDAF 40353 - IDAF 40354 - IDAF 40355)
Code UGLN 49995 (IDAF 40357 - IDAF 40359)



The anti-vibration coupling between the pump and engine extends the working life of the components and simplifies maintenance (L versions).



The HS 2620 has a thermostatic valve to protect the pump from possible overheating of the water.



Honda GX air-cooled 4-stroke petrol engines with overhead valves.



L versions are fitted with a reduction gear in oil bath to extend the working life of the pump.



Multipurpose valve:
 - Easy Start: to start the motor effortlessly.
 - Thermostatic valve: to protect the pump from possible overheating.
 - By Pass
 - Pressure regulation: to adjust pressure to the surface.

Technical characteristics

BENZ-C H1811Pi P

- THERMOSTATIC valve.
- 280 mm dia. wheels.

BENZ L

- Motor revolutions reduction gear.

ALL OTHERS MODELS

- H.P. crankshaft pump with brass head and ceramic pistons.
- Petrol motors, Honda GX serie, air-cooled 4-stroke overhead valves, manual start and low oil sensor.

- THERMOSTATIC valve and EASY START.
- DL models are equipped with hydraulic decelerator for reduction of motor revolutions during By Pass phase, which allows to reduce consumptions, noise and to increase mechanical components working life.
- Grab bar and tubular steel bumper with rests for lance or gun.
- Steel supporting structure designed to absorb all motor vibrations.
- Pressure adjustment.
- Low pressure detergent delivery with control on lance.
- 315 mm dia. wheels.

Code	Model	Remote control	Pressure (bar)	Flow rate (l/h)	Motor type	Motor (Hp)	RPM	Detergent tank (l)	Weight (Kg)	Dimensions (cm)
IDAF 40352	BENZ-C H1811Pi P	By Pass	30-180	330-660	GX 200	6,5	3600	-	47	86x56x54
IDAF 40353	BENZ-C H2013Pi P	By Pass	30-200	400-800	GX 270	9,0	3600	-	70	105x66x75
IDAF 40354	BENZ-C H2515Pi P	By Pass	30-250	450-900	GX 390	13	3600	-	75	105x66x75
IDAF 40355	BENZ-C H DL2515Pi P	By Pass	20-250	450-900	GX 390	13	3600	-	75	105x66x75
IDAF 40356	BENZ-C L2216Pi P	By Pass	30-220	500-1000	GX 390	13	1500	-	85	105x66x75
IDAF 40357	BENZ-C L2021Pi P	By Pass	30-200	630-1260	GX 390	13	1500	-	85	105x66x75
IDAF 40358	BENZ-C L DL2217Pi P	By Pass	30-220	500-1000	GX 390	13	1500	-	85	105x66x75
IDAF 40359	BENZ-C L DL2021Pi P	By Pass	30-200	630-1260	GX 390	13	1500	-	85	105x66x75

Recommended optional accessories



Flexible hose
 15 m Code TBAP 16654
 20 m Code TBAP 16655



Hose couplings
 Code RCIN 10810



Lance with double nozzle holder
 Code LCPR 24906



Mudguard lance
 Code LCPR 29360



Double lance
 30 cm Code LCPR 12981
 50 cm Code LCPR 12982
 70 cm Code LCPR 12983



Sandblaster kit
 Code LCPR 14858



Hoose reel
 Code KTRI 37674



Hot water generator

FIRE BOX



**HOT WATER
GENERATOR**

Heats cold water to 140°C,
indispensable where hot water is
needed for more effective washing.



Output coupling M22 x 1.5 male.
Input coupling 3/8" male.



High pressure, high temperature hose with M22 couplings
(for connecting to water cleaner).
Code TBAP 29050 (+ RCIN 03755)



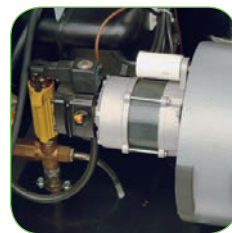
High pressure high temperature hose with M22 couplings (for connecting to the high pressure washer).



Cover and trolley in painted sheet metal, two fixed wheels + one swivelling wheel with brake.



New high efficiency, long life, weld-free boiler made entirely from stainless steel.



Single-phase burner motor directly connected to fan and diesel fuel pump.

Technical characteristics

- Double turn coil made from steel tubing, treated with high temperature paints. The coil in the FIRE 30 is 30 m long; the coil in the FIRE 40 is 40 m long.
- Heats cold water with a minimum feed pressure of 4 bars.
- Input coupling 3/8" male
- Safety devices: check valve, safety valve, and flow meter to check for the absence of water.

Code	Model	Pressure (bar)	Water Flow (l/h)	Voltage (Ph-V-Hz)	Absorbed power (kW)	Burner fuel consumption (Kg/h)	Fuel tank (l)	Weight (Kg)	Dimensions (cm)
CDVE 49715	FIRE BOX 30 M	175	360÷1260	1-230-50	0,3	5,8	18	92	79x75x92
CDVE 49716	FIRE BOX 40 M	200	360÷1260	1-230-50	0,3	7,4	18	112	79x75x92



Hot water high pressure washers

Decades of experience have allowed IPC to develop a wide range of specialist hot water pressure washers for all type of use and application. IPC exclusive “IPC Power Pump” crankshaft pumps give these models the power to handle even the toughest jobs, while robust “IPC Power Boil” boilers guarantee unrivalled performance under all operating conditions. All IPC pressure washers are easy to maintain. Just lift the cover and all serviceable components are readily accessible. A wide range of accessories is also available to add to the versatility of each model and to meet all possible market needs.

PW-H10 page 34



Sectors	
Agriculture	○ ○ ○ ○ ○ ○ ○ ○
Automotive	○ ○ ○ ○ ○ ○ ○ ○
Building	○ ○ ○ ○ ○ ○ ○ ○
Hardware	● ● ○ ○ ○ ○ ○ ○
Industry	○ ○ ○ ○ ○ ○ ○ ○

Utilization x day	
h 0	8



PW-H25 page 36



Sectors	
Agriculture	○ ○ ○ ○ ○ ○ ○ ○
Automotive	○ ○ ○ ○ ○ ○ ○ ○
Building	○ ○ ○ ○ ○ ○ ○ ○
Hardware	● ● ○ ○ ○ ○ ○ ○
Industry	○ ○ ○ ○ ○ ○ ○ ○

Utilization x day	
h 0	8



PW-H30 page 38



Sectors	
Agriculture	● ● ○ ○ ○ ○ ○ ○
Automotive	● ● ○ ○ ○ ○ ○ ○
Building	● ● ○ ○ ○ ○ ○ ○
Hardware	● ● ○ ○ ○ ○ ○ ○
Industry	● ● ○ ○ ○ ○ ○ ○

Utilization x day	
h 0	8



PW-H40 page 40



Sectors	
Agriculture	● ● ● ● ○ ○ ○ ○
Automotive	● ● ● ● ○ ○ ○ ○
Building	● ● ● ● ○ ○ ○ ○
Hardware	● ● ● ● ○ ○ ○ ○
Industry	● ● ● ● ○ ○ ○ ○

Utilization x day	
h 0	8



PW-H40/4 page 42



Sectors	
Agriculture	● ● ● ● ○ ○ ○ ○
Automotive	● ● ● ● ○ ○ ○ ○
Building	● ● ● ● ○ ○ ○ ○
Hardware	● ● ● ● ○ ○ ○ ○
Industry	● ● ● ● ○ ○ ○ ○

Utilization x day	
h 0	8



PW-H80 page 44



Sectors	
Agriculture	● ● ● ● ● ● ● ●
Automotive	● ● ● ● ● ● ● ●
Building	● ● ● ● ● ● ● ●
Hardware	○ ○ ○ ○ ○ ○ ○ ○
Industry	● ● ● ● ● ● ● ●

Utilization x day	
h 0	8



PW-H10



HOSE REEL
(Optional IDAC 40344 - Standard IDAC 40345)

DIESEL TANK capacity of 4 litres,
transparent to monitor diesel level
at all times.

PW-H10 I1207A M

Lance CMB P 2004
Extension
Turbo head
Gun
H.P. hose 8 m
Foam kit SWING

Code LCTE 91693
Code LCPR 91704
Code LCTE 84742
Code IPPR 93838
Code TBAP 20264
Code LCPR 90295

PW-H10 I1408A M

Gun with SWIVEL
Multireg lance
Turbo lance
Professional foam kit

Code IPPR 40007
Code LCPR 93173
Code LCPR 40011
Code LCPR 40040



Sturdy ergonomic handle for convenient easy manoeuvring.



ON/OFF and hot water knob.



Large front foot for greater stability.



The large diameter wheels facilitate movement of the machine.



Built-in lance holder.

Technical characteristics

MOTOR

- Electric induction motor, 2-pole (2800 rpm), continuous duty with thermal cutout. Maintenance free
- Boiler ventilation with independent motor.
- Diesel pump resistant to water and/or impurities.
- Delayed diesel injection to avoid smoke during boiler start-up.

BOILER

- Painted steel boiler for greater thermal and mechanical resistance and a longer working life. High efficiency combustion in respect of international rules and standards. No tools required for disassembly making cleaning and/or maintenance quicker. Double turn coil for maximum efficiency.

Code	Model	Remote control	Pressure (bar)	Flow rate (l/h)	Voltage (Ph-V-Hz)	Absorbed Power (kW)	Motor (Hp)	RPM	Detergent tank (l)	Weight (Kg)	Dimensions (cm)
IDAC 40344	PW-H10 I1207A M	Total Stop I	120	400	1-230-50	2,1	2	2800	0,5	49	64x48x75
IDAC 40345	PW-H10P I1408A M	Total Stop I	140	450	1-230-50	2,4	2,5	2800	1	49	64x48x75

For both models, the output water temperature is 55°C. Diesel tank capacity of 4 litres.

Recommended optional accessories



Fixed hydro-brush lance
Code KTRI 94031
(IDAC 40344)



Foam head
Code KTRI 94037
(IDAC 40344)



Rotating hydro-brush lance
Code SPID 24911
(IDAC 40345)



Fixed hydro-brush lance
Code SPID 24939
(IDAC 40345)



Hydro-brush lance
Code KTRI 94032
(IDAC 40344)



Drain Kit
8 m Code KTRI 94037
15 m Code KTRI 94038
(IDAC 40344)
10 m Code TBAP 23853
(IDAC 40345)



Floor Cleaner Kit
Code KTRI 94019
(IDAC 40344)



Foam head
Code LCPR 24937
(IDAC 40345)



Hot water high pressure washers

PW-H25



HOSE REEL (optional)
Code KTRI 39112



H.P. flexible hose 10 m
Code TBAP 25324



Handgrip
Code IPPR 40010



Double lance Inox P70
Code LCPR 12983



Nozzle for lance
Code UGLN 49991



Sturdy ergonomic handle for convenient easy manoeuvring.



Sturdy structure, shockproof, resistant to thermal shock and atmospheric agents.



The 4 large diameter wheels make the machine stable and facilitate movement on all surfaces (concrete, dirt tracks, gravel, etc.).



Diesel tank holding 10 litres.



Simple electric panel complete with ON/OFF and output water temperature adjustment knob.

Technical characteristics

- Low pressure detergent delivery controlled from lance.
- Pressure adjustment and steam knob accessible from outside, allowing pressure to be adapted to various cleaning situations.
- Crankshaft pump with brass head and ceramic pistons.
- Pressure gauge to monitor work pressure at all times.
- Lance holder and H.P. hose support.
- Thanks to the numerous accessories, including trigger gun with heatproof extension, 70 cm double stainless steel lance with pressure control device and detergent control, 10 m high pressure and temperature hose.
- The safety level is guaranteed by:
 - adjustable thermostat to modulate and limit water temperature;
 - automatic pressure switch;
 - safety valve to limit possible overpressure.

Code	Model	Remote control	Pressure (bar)	Flow rate (l/h)	Voltage (Ph-V-Hz)	Absorbed Power (kW)	Motor (Hp)	RPM	Detergent tank (l)	Weight (Kg)	Dimensions (cm)
IDAC 40346	PW-H25 D1110P M	Total Stop D	40÷110	300÷600	1-230-50	2,7	2,5	2800	10	95	96x66x88
IDAC 40347	PW-H25 D1813P T	Total Stop D	40÷180	390÷780	3-400-50	5,3	5,5	2800	10	95	96x66x88

For the D1110P M model, the output water temperature is 70÷120°C. For the D1813P T model, the output water temperature is 65÷120°C. For both models, fuel tank capacity of 10 litres. Burner fuel consumption is 3,2 kg/h (D1110P M) - 3,3 kg/h (D1813P T).

Recommended optional accessories



Hydro-brush lance
Code LCPR 29362



Fixed hydro-brush lance
Code SPID 24939



Foam head
Code LCPR 24937



Feeding kit
Code KTRI 29377



Lances for washing floors
Code LCLC 41140



Drain Kit 10 m.
Code TBAP 23853



Plunged ejector device
Code KTRI 29366



PW-H30



HOSE REEL (optional)
Code KTRI 48748



H.P. flexible hose 10 m
Code TBAP 25324



Handgrip
Code IPPR 40010



Extension Inox P70
Code LCPR 12976



Nozzle for lance
Code UGLN 49990
(IDAC 40348 - IDAC 40352)
Code UGLN 49987
(IDAC 40353)



Simple electric panel with ON/OFF switch and temperature regulation thermostat.



Sturdy ergonomic handles for convenient easy manoeuvring.



The large diameter rear wheels and large swivelling wheel with brake facilitate movement of the machine.



Eight litre detergent tank and 12 litre fuel tank. Large diameter filler.



Convenient accessories compartment to keep everything within reach at all times.

Technical characteristics

- Electric motor: asynchronous, 2-pole (2800 rpm) in D1310A and D1613P models. Asynchronous, 4-pole (1400 rpm) in the D1310P model. High efficiency continuous duty with thermal cutout.
- Pressure adjustment and steam knob, allowing pressure to be adapted to various cleaning situations.
- Water softener device with flow rate adjustable according to water hardness.

PW-H30 D 1310A M:

Axial pump designed for a long working life. Reinforced bearings, brass head, ceramic pistons and gaskets for a long working life.

PW-H30 D 1310 P M / D 1613 P T:

Crankshaft pump with brass head and ceramic pistons.

Code	Model	Remote control	Pressure (bar)	Flow rate (l/h)	Voltage (Ph-V-Hz)	Absorbed Power (kW)	Motor (Hp)	RPM	Detergent tank (l)	Weight (Kg)	Dimensions (cm)
IDAC 40348	PW-H30 D1310A M	Total Stop D	40÷130	300÷600	1-230-50	3	3	2800	8	88	98x67x81
IDAC 40352	PW-H30 D1310P M	Total Stop D	40÷130	300÷600	1-230-50	3	3	1400	8	88	98x67x81
IDAC 40353	PW-H30 D1613P T	Total Stop D	40÷160	300÷780	3-400-50	5	5,5	2800	8	88	98x67x81

For the D1310 models, the output water temperature is 30÷140°C. For the D1613 P model, the output water temperature is 30÷100°C. In all models, diesel tank capacity of 14 litres. Fuel consumption is 3.2 kg/h.

Recommended optional accessories



Rotating hydro-brush lance
Code SPID 24911



Fixed hydro-brush lance
Code SPID 24939



Foam head
Code LCPR 24937



Feeding kit
Code KTRI 29377



Lances for washing floors
Code LCLC 41140



Drain Kit 10 m.
Code TBAP 23853



Plunged ejector device
Code KTRI 29366



Hot water high pressure washers

PW-H40



HOSE REEL (optional)
Code KTRI 45716



H.P. flexible hose 10 m
Code TBAP 25324



Handgrip
Code IPPR 40010



Extension Inox P70
Code LCPR 12976



Nozzle for lance
Code UGLN 49993
(IDAC 40354)
Code UGLN 49991
(IDAC 40355 - IDAC 40356)



Ergonomic handle for easy convenient transport, complete with lance holder.



Control panel with: motor and burner start-up temperature regulation detergent tap professional pressure gauge to display working pressure at all times.



Useful convenient accessories compartments to keep everything within reach at all times.



Pressure adjustment and steam knob accessible from outside, allowing pressure to be adapted to various cleaning situations.



Swivelling wheel with brake to stabilise the machine on all surfaces.

Technical characteristics

- Electric motor, 4-pole, 1400 rpm, continuous duty with double bearing and thermal cutout. Extends the working life of mechanical components.
- Pressure adjustment and steam knob accessible without moving the cover.
- Two large diameter front wheels and swivelling rear wheel making the machine more stable and easier to transport. The wheels are fixed to a steel frame.
- Detergent and fuel tanks holding 20 litres. With caps for emptying and cleaning.
- Water softener device with pump controlled by a circuit board. The amount of water softener can be adjusted according to water hardness.

Code	Model	Remote control	Pressure (bar)	Flow rate (l/h)	Voltage (Ph-V-Hz)	Absorbed Power (kW)	Motor (Hp)	RPM	Detergent tank (l)	Weight (Kg)	Dimensions (cm)
IDAC 40354	PW-H40 D1310P M	Total Stop D	40÷130	300÷600	1-230-50	3,3	3	1400	20	105	105x75x90
IDAC 40355	PW-H40 D1813P T	Total Stop D	40÷175	400÷800	3-400-50	5,5	6	1400	20	109	105x75x90
IDAC 40356	PW-H40 D1915P T	Total Stop D	40÷190	450÷900	3-400-50	5,5	6	1400	20	109	105x75x90
IDAC 40457	PW-H40 D2017P T	Total Stop ITS	40÷200	500÷1000	3-400-50	7,2	7,5	1400	20	115	105x75x90

In all models, the output water temperature is 30÷140°C. Diesel tank capacity of 20 litres. For the D1310 P M model, the fuel consumption is 4 kg/h. For D1813 P and 1915 P M models, it is 5.8 kg/h.

Recommended optional accessories



Rotating hydro-brush lance
Code SPID 24911



Fixed hydro-brush lance
Code SPID 24939



Foam head
Code LCPR 24937



Feeding kit
Code KTRI 29377



Lances for washing floors
Code LCLC 41140



Drain Kit 10 m.
Code TBAP 23853



Plunged ejector device
Code KTRI 29366



Hot water high pressure washers

PW-H40/4



HOSE REEL (optional)
Code KTRI 40053



H.P. flexible hose 10 m
Code TBAP 25324



Handgrip
Code IPPR 40010



Extension Inox P70
Code LCPR 12976



Nozzle for lance
Code UGLN 49993
(IDAC 40357)
Code UGLN 49991
(IDAC 40329 - IDAC 40330)



Ergonomic handle for easy convenient transport, complete with lance holder.



Easy handling on every kind of surface (cement, dirt tracks, gravel, etc.).



Control panel with:
 - motor and burner start-up
 - temperature regulation
 - detergent tap
 - professional pressure gauge to display working pressure at all times.



Wheel brake to stabilise the machine on all surfaces.



Machine designed for raising.

Technical characteristics

- Electric motor, 4-pole, 1400 rpm, continuous duty with double bearing and thermal cutout. Extends the working life of mechanical components.
- Pressure adjustment and steam knob incorporated in the pump.
- Crankshaft pump with brass head and ceramic pistons.
- Antiscale device with pump controlled by electronic card. The quantity of product can be regulated according to water hardness.
- The four large diameter front wheels make the machine more stable and easier to transport. The wheels are fixed to a steel frame.
- The detergent and fuel tanks hold 20 litres and are incorporated in the trolley. With caps for emptying and cleaning.

Code	Model	Remote control	Pressure (bar)	Flow rate (l/h)	Voltage (Ph-V-Hz)	Absorbed Power (kW)	Motor (Hp)	RPM	Detergent tank (l)	Weight (Kg)	Dimensions (cm)
IDAC 40357	PW-H40/4 D1310P M	Total Stop D	40÷130	300÷600	1-230-50	3,3	3	1400	20	105	105x75x90
IDAC 40329	PW-H40/4 D1813P T	Total Stop D	40÷175	400÷800	3-400-50	5,5	6	1400	20	109	105x75x90
IDAC 40330	PW-H40/4 D1915P T	Total Stop D	40÷190	450÷900	3-400-50	5,5	6	1400	20	109	105x75x90
IDAC 40458	PW-H40/4 D2017P T	Total Stop ITS	40÷200	500÷1000	3-400-50	7,2	7,5	1400	20	115	105x75x90

In all models, the output water temperature is 30÷140°C. Diesel tank capacity of 20 litres.
 In the D1310 M model, the fuel consumption is 4 Kg/h. In the D1813 P and 1915 P T models, it is 5.8 Kg/h.

Recommended optional accessories



Rotating hydro-brush lance
Code SPID 24911



Fixed hydro-brush lance
Code SPID 24939



Foam head
Code LCPR 24937



Feeding kit
Code KTRI 29377



Lances for washing floors
Code LCLC 41140



Drain Kit 10 m
Code TBAP 23853



Plunged ejector device
Code KTRI 29366



PW-H80



HOSE REEL (optional)
Code KTRI 88654

- Stainless steel boiler with steel coil double loop (30 m long)



H.P. flexible hose 10 m
Code TBAP 25324



Handgrip + extension
Code IPPR 40002



Double lance Inox PD70
Code LCPR 12983



Nozzle for lance
Code UGLN 49987



Water softener device with pump controlled by circuit board. The quantity of product can be regulated according to water hardness.



Pressure adjustment and steam knob accessible from the outside.



The fan and fuel pump are driven by an independent motor.



The machine is mounted on a moulded high density polyethylene frame. The trolley has lifting handles and an ergonomic handle for easy convenient transport.



Control panel with motor and burner ON/OFF switch, adjustable thermostat, detergent tap, pressure gauge. Indicator lights: micro-leaks, diesel and water softener level.

Technical characteristics

- Electric motor, 4-pole, 1400 rpm, continuous duty with double bearing and thermal cutout. Extends the working life of mechanical components.
- H.P. crankshaft pump with brass head and ceramic pistons.
- Two 125mm swivelling wheels at the back and two 300mm front wheels make the machine stable and easy to transport.
- The detergent and fuel tanks and water tank are incorporated in the trolley. With caps for emptying.

- High pressure detergent delivery.



- High efficiency boiler mounted on a steel plate, 30 m double pass steel coil.
- The low voltage controls guarantee maximum user safety.

Code	Model	Remote control	Pressure (bar)	Flow rate (l/h)	Voltage (Ph-V-Hz)	Absorbed Power (kW)	Motor (Hp)	RPM	Detergent tank (l)	Weight (Kg)	Dimensions (cm)
IDAC 40358	PW-H80 D2017P T	Total Stop ITS	40÷200	500÷1000	3-400-50	7,2	7,5	1400	25	155	109x70x87

The output water temperature is 30÷140°C. Fuel tank capacity of 25 litres. Burner fuel consumption is 5,8 kg/h.

Recommended optional accessories



Mudguard lance
Code LCPR 29360



Lance with double nozzle holder
Code LCPR 24906



Foam head
Code LCPR 24937



Fixed hydro-brush lance
Code SPID 24939



Lances for washing floors
Code LCLC 41140



Sandblaster kit
Code LCPR 14859
Sand bag 50kg
Code PRCH 00065



Drain Kit
10 m Code TBAP 23853
20 m Code TBAP 24406



Plunged ejector device
Code KTRI 29366



PW-H80



HOSE REEL (optional)
Code KTRI 88654

- Stainless steel boiler with steel coil double loop (40 m long)



H.P. flexible hoses 10 m
Code TBAP 25324 (IDAC 40359)
Code TBAP 40009 (IDAC 40360)



Handgrip + extension
Code IPPR 40002



Double lance Inox PD70
Code LCPR 12983



Nozzle for lance
Code UGLN 49998 (IDAC 40359)
Code UGLN 49995 (IDAC 40360)



Water softener device with pump controlled by circuit board. The quantity of product can be regulated according to water hardness.



Pressure adjustment and steam knob accessible from the outside.



The fan and fuel pump are driven by an independent motor.



The machine is mounted on a moulded high density polyethylene frame. The trolley has lifting handles and an ergonomic handle for easy convenient transport.



Control panel with motor and burner ON/OFF switch, adjustable thermostat, detergent tap, pressure gauge. Indicator lights: micro-leaks, diesel and water softener level.

Technical characteristics

- Electric motor, 4-pole, 1400 rpm, continuous duty with double bearing and thermal cutout. Extends the working life of mechanical components.
- H.P. crankshaft pump with brass head and ceramic pistons.
- Two 125mm swivelling wheels at the back and two 300mm front wheels make the machine stable and easy to transport.
- The detergent and fuel tanks and water tank are incorporated in the trolley. With caps for emptying.

- High pressure detergent delivery.



- High efficiency boiler mounted on a steel plate, 40 m double pass steel coil.
- The low voltage controls guarantee maximum user safety.

Code	Model	Remote control	Pressure (bar)	Flow rate (l/h)	Voltage (Ph-V-Hz)	Absorbed Power (kW)	Motor (Hp)	RPM	Detergent tank (l)	Weight (Kg)	Dimensions (cm)
IDAC 40359	PW-H80 D1521P T	Total Stop ITS	40÷150	650÷1300	3-400-50	7,2	7,5	1400	25	155	109x70x87
IDAC 40360	PW-H80 D1921P T	Total Stop ITS	40÷190	650÷1300	3-400-50	8,5	9	1400	25	155	109x70x87

The output water temperature is 30÷140°C. Fuel tank capacity of 25 litres. Burner fuel consumption is 5,8 kg/h.

Recommended optional accessories



Mudguard lance
Code LCPR 29360



Lance with double nozzle holder
Code LCPR 24906



Foam head
Code LCPR 24937



Fixed hydro-brush lance
Code SPID 24939



Lances for washing floors
Code LCLC 41140



Sandblaster kit
Code LCPR 14859
Sand bag 50kg
Code PRCH 00065



Drain Kit
10 m Code TBAP 23853
20 m Code TBAP 24406



Plunged ejector device
Code KTRI 29366



Hot water high pressure washers

PW-H90



HOSE REEL
(standard in Plus models)
Code KTRI 86962



Nozzle for lance
Code UGLN 49997 (IDAC 40361)
Code UGLN 49996
(IDAC 40362 - IDAC 40364)



H.P. flexible hoses
10 m Code TBAP 40009 (IDAC 40361 - IDAC 40362)
15 m Code TBAP 07778 (IDAC 40364 - IDAC 40363)



Handgrip + extension
Code IPPR 40002



Double lance Inox PD70
Code LCPR 12983



Pressure adjustable from the outside.



The 16 litre detergent tank and 30 litre fuel tanks are built into the trolley. With caps for emptying and cleaning.



Ergonomic handles for easy convenient transport.



Two swivelling wheels at the back and two front wheels make the machine stable and easy to transport.



Control panel with motor and burner ON/OFF switch, adjustable thermostat, detergent tap, pressure gauge. Indicator lights: micro-leaks, diesel and water softener level.

Technical characteristics

- Electric motor: asynchronous, continuous duty, 1400 rpm. Guarantees the mechanical components a long and maintenance free working life. The motor is protected with thermal cutout.
- The low voltage controls guarantee maximum user safety.
- H.P. crankshaft pump with brass head and ceramic pistons.
- High efficiency stainless steel boiler, no rust formation. Double turn steel coil (40 m).
- Anti-vibration coupling between pump and motor.
- Boiler ventilation with independent motor.
- The electric panel is protected from splashes of water and dirt by a transparent cover.
- Water softener tank holding 3.5 litres.
- Pump-motor connection with anti-vibration coupling for low vibrations, improves the reliability and working life of all mechanical components.

Code	Model	Remote control	Pressure (bar)	Flow rate (l/h)	Voltage (Ph-V-Hz)	Absorbed Power (kW)	Motor (Hp)	RPM	Detergent tank (l)	Weight (Kg)	Dimensions (cm)
IDAC 40361	PW-H90 D1521P T	Total Stop ITS	40÷150	650÷1300	3-400-50	7	7,5	1400	16	205	131x77x95
IDAC 40362	PW-H90 D1921P T	Total Stop ITS	40÷190	650÷1300	3-400-50	8,7	9	1400	16	210	131x77x95
IDAC 40363	PW-H90P D1521P T	Total Stop ITS	40÷150	650÷1300	3-400-50	7	7,5	1400	16	205	131x77x95
IDAC 40364	PW-H90P D1921P T	Total Stop ITS	40÷190	650÷1300	3-400-50	8,7	9	1400	16	210	131x77x95

The output water temperature is 30÷140°C. Diesel tank capacity of 30 litres. Fuel consumption is 7.6 kg/h.

Recommended optional accessories



Mudguard lance
Code LCPR 29360



Lance with double nozzle holder
Code LCPR 24906



Double lance
50 cm Code LCPR 12981
70 cm Code LCPR 12982



Drain Kit
10 m Code TBAP 23853
20 m Code TBAP 24406



Lances for washing floors
Code LCLC 41140

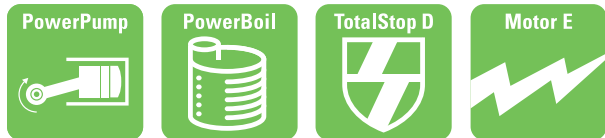


Plunged ejector device
Code KTRI 29366



Hot water high pressure washers

TWOCK



H.P. flexible hose 15 m
Code TBAP 40011



Handgrip G4500 + extension
Code IPPR 89429



Extension Inox P70
Code LCPR 12976



Nozzle for lance
Code UGLN 02312



The H D2030DPi T model has a 4-pole electric motor (1450 Rpm), the H D1341Pi T model has a 6-pole motor (1000 Rpm). Both motors are protected by thermal cutout.



Remote Total Stop control with automatic reset.



In both models, high pressure crankshaft pump with six ceramic pistons and two brass heads.



Control panel with pump and burner control, thermostat, pressure gauge, steam and detergent valve, no oil and water softener light, emergency stop button.



Painted steel structure, easy to remove for all maintenance.

Technical characteristics

- Anti-vibration coupling between motor and pump.
- Burner shut down if the machine runs out of diesel.
- Two vertical boilers in painted steel with double turn coil made from steel tubing.
- Flame control device
- Automatic safety shut down of boiler.
- Pressure regulation and steam production valve.
- Diesel tank holding 54 litres.
- Stainless steel water tank holding 40 litres, with electric float control and solenoid valve.
- Water softener tank holding 3.5 litres.
- High pressure detergent delivery.
- 24V controls.
- Emergency stop button.
- Magnetothermic switch.
- Safety thermostat.
- Water softener delivery system.
- Epoxy powder painted steel load-bearing structure.
- Provision for fitting 2 lances.

Code	Model	Remote control	Pressure (bar)	Flow rate (l/h)	Voltage (Ph-V-Hz)	Absorbed Power (kW)	Motor (Hp)	RPM	Fuel tank (l)	Weight (Kg)	Dimensions (cm)
IDAC 49713	TWOCK-H D2030Pi T	Total Stop D	130	2460	3-400-50	11	15	1450	54	441	140x86x86
IDAC 49714	TWOCK-H D1341Pi T	Total Stop D	200	1800	3-400-50	12,8	15	1000	54	480	140x86x86

The output water temperature is 30÷140°C. Burner fuel consumption is 8,4x2 kg/h.

Recommended optional accessories



Flexible hose
Code TBAP 15632



Steam lance
Code LCPR 29363



Plunged ejector device
Code KTRI 29366



Lance holder
Code KTRI 28935



Hose reel kit
Code AVTB 39119



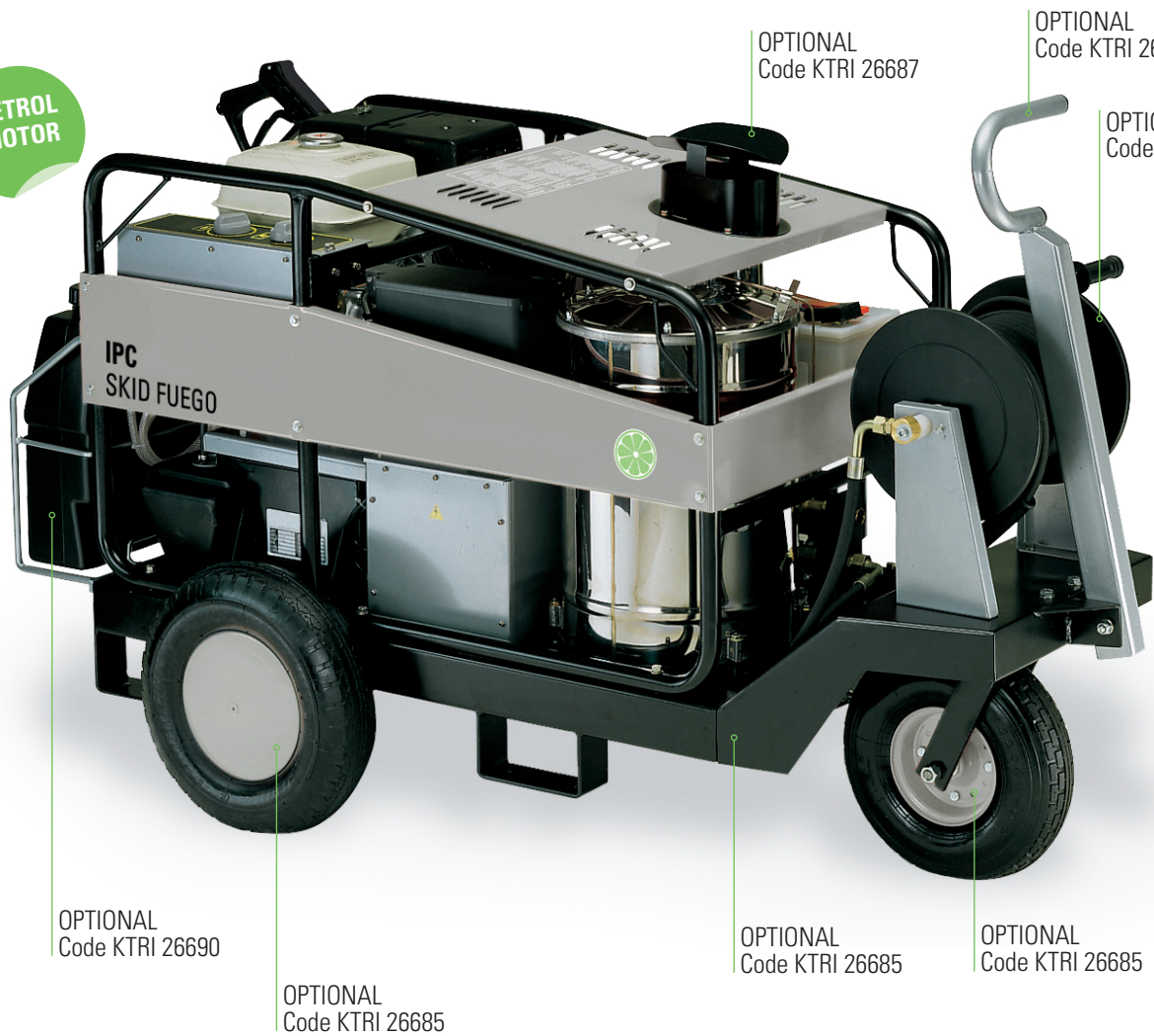
Rotating arm
Code KTRI 28914



SKID FUEGO



PETROL MOTOR



H.P. flexible hose 10 m
Code TBAP 40009



Handgrip G4500
Code IPPR 89429



Lance 70 cm
Code LCPR 12976



Nozzle for lance
Code UGLN 49994



Stainless steel boiler with >89% efficiency. Painted steel 30m double turn coil.



Manual hose reel, enabling the hose to be stored simply, protecting it from all damage (optional).



Epoxy polyester powder coated tubular frame-trolley designed to attenuate all vibrations produced by the motor.



Manual pull handle (optional).



Designed to be lifted with lift truck and installed on a vehicle.

Technical characteristics

- Crankshaft pump with three ceramic pistons and forged brass head.
- Petrol-fuelled internal combustion engine, single cylinder, 4-stroke, HONDA GX 340-LXE, with rev reducer, electric starting, emergency recoil starter and "no oil" sensor.
- Decelerator to reduce the engine revs in the By Pass phase.
- Burner control devices triggered in the absence of water.
- Double turn 30 m coil made from painted steel tubing.
- Pressure and steam phase regulation.
- Thermostat for selecting water output temperature.
- Water tank with float control and filter.
- High pressure detergent delivery.
- Pump-motor connection with anti-vibration coupling for low vibrations, improves the reliability and working life of all mechanical components.

Code	Model	Remote control	Pressure (bar)	Flow rate (l/h)	Outgoing water temperature (°C)	Motor type	Motor power (Hp)	RPM	Detergent tank (l)	Weight (Kg)	Dimensions (cm)
IDAC 49710	SKID FUEGO-H L1818Pi P	By Pass	70÷180	680÷1080	80÷120	Honda GX340LX	11	1800	16 (opt)	240	117x68x87

Burner fuel consumption is 5.6 kg/h. Diesel tank capacity of 26 litres. Antiscale device tank capacity of 1 litre (optional).

Recommended optional accessories



Feeding kit
Code KTRI 29377



Fixed hydro-brush lance
Code SPID 24939



Drain Kit 10 m
Code TBAP 23853



Lance with double nozzle holder
Code LCPR 24906



Mudguard lance
Code LCPR 29360

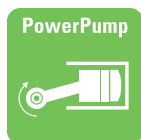


Hydro-brush lance
Code LCPR 29362



Hot water high pressure washers

V 200 MD A.E.



DIESEL
MOTOR



H.P. flexible hose 10 m
Code TBAP 40009



Handgrip G4500
Code IPPR 89429



Lance 70 cm
Code LCPR 12976



Nozzle for lance
Code UGLN 05197



Swing cover to simplify maintenance.



Water output coupling.



Water input coupling.



H.P. crankshaft pump with three ceramic pistons and nickel-plated forged brass head.



Large diameter pneumatic wheels making the machine more stable and easy to transport on all types of ground.

Technical characteristics

- Ruggerini RD 210 two-cylinder diesel engine with electric starter.
- Automatic accelerator remote controlled from trigger gun.
- Safety check-up on engine with indication of:
 - no fuel;
 - engine shut down due to lack of lubrication;
 - engine shut down due to lack of fuel;
 - inadequate battery charge.
- Synchronous generator to power electronic equipment.
- Steel boiler.
- Double turn steel coil.
- Water softener device.
- Pressure and steam phase regulation.
- Built-in detergent tank.
- Built-in 27 litres diesel tank.
- Built-in 2 litres water softener tank.
- Water tank holding 7 litres with float control.
- Input water filter.
- Steel load-bearing structure designed to absorb all vibrations generated by the two cylinder engine.
- Epoxy powder painted.
- Swing cowling in painted fibreglass lined with soundproofing material.

Code	Model	Remote control	Pressure (bar)	Flow rate (l/h)	Outgoing water temperature (°C)	Motor type	Motor power (Hp)	RPM	Fuel tank (l)	Weight (Kg)	Dimensions (cm)
IDAC 49711	V 200 MD-H 2015Pi D	By Pass	200	900	30÷150	Ruggerini RD210 diesel	20	3000	27	380	130x86x84

Burner fuel consumption is 6.7 kg/h.

Recommended optional accessories



Plunged ejector device
Code KTRI 29366



Lance holder
Code KTRI 28935



Hose reel kit
Code AVTB 39119



Lance with double nozzle holder
Code LCPR 24906



Mudguard lance
Code LCPR 29360



Steam lance
Code LCPR 29363

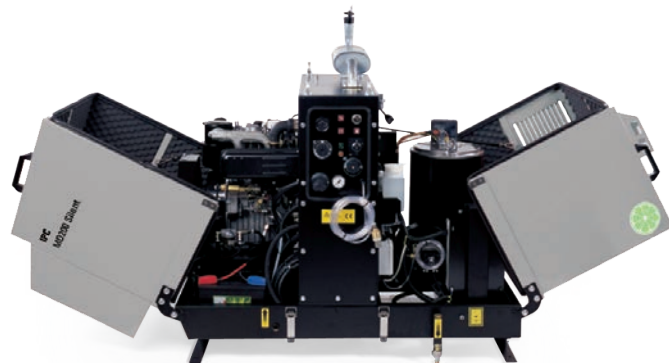


Rotating arm
Code KTRI 28914



Hot water high pressure washers

MD 200 SILENT



**DIESEL
MOTOR**



H.P. flexible hose 10 m
Code TBAP 40009



Handgrip G4500
Code IPPR 89429



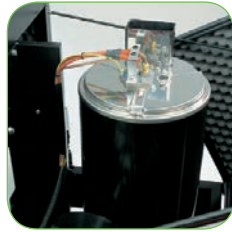
Lance 70 cm
Code LCPR 12976



Nozzle for lance
Code UGLN 49987



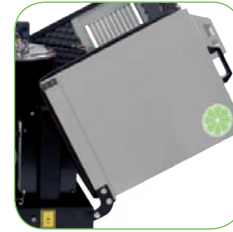
Ruggerini RD 210 two-cylinder diesel engine with electric starter.



Double pass boiler.



Safety check-up on engine with indication of:
- no fuel;
- engine shut down due to lack of lubrication/fuel;
- inadequate battery charge.



Swing covers to simplify maintenance.



Water output coupling.

Technical characteristics

- H.P. crankshaft pump with three ceramic pistons and nickel-plated forged brass head.
- Automatic accelerator remote controlled from trigger gun.
- Synchronous generator to power electronic equipment.
- Double turn steel coil.
- Pressure and steam phase regulation.
- Built-in detergent tank.
- Built-in diesel fuel tank.
- Built-in water softener device with 2 litre tank.
- Input water filter.
- Steel load-bearing structure designed to absorb all vibrations generated by the two cylinder engine.
- Fixed frame mounted on skids for easy attachment to tow vehicle or similar.
- Maximum soundproofing obtained through almost total closure of the machine, enabling insulation of internal components.
- Double exhaust with silencer.

Code	Model	Remote control	Pressure (bar)	Flow rate (l/h)	Outgoing water temperature (°C)	Motor type	Motor power (Hp)	RPM	Fuel tank (l)	Weight (Kg)	Dimensions (cm)
IDAC 49712	V 200 MD SIL-H 2015Pi D	By Pass	200	900	30÷150	Ruggerini RD210 diesel	20	3000	54	461	148x86x135

Burner fuel consumption is 6.7 kg/h.

Recommended optional accessories



Plunged ejector device
Code KTRI 29366



Lance holder
Code KTRI 28935



Hose reel kit
Code AVTB 39119



Lance with double nozzle holder
Code LCPR 24906



Mudguard lance
Code LCPR 29360



Steam lance
Code LCPR 29363



Rotating arm
Code KTRI 28914



Professional fixed pressure washers

Made to the highest quality standards, these models incorporate extremely reliable components like the "IPC Power Pump" for heavy duty applications and the ultra-robust "IPC Power Boil" boiler. Frames and casings are entirely made from stainless steel, and permit these units to be wall-mounted or installed as floor-standing models.

Fixes units are especially suited to applications like car washing, food processing and industry in general.





ML CMP page 60



Sectors

Agriculture	○ ○ ○ ○ ○ ○ ○ ○
Automotive	● ● ● ● ● ● ● ●
Building	● ● ● ● ● ● ● ●
Hardware	○ ○ ○ ○ ○ ○ ○ ○
Industry	● ● ● ● ● ● ● ●

Utilization x day



ML page 62



Sectors

Agriculture	○ ○ ○ ○ ○ ○ ○ ○
Automotive	● ● ● ● ● ● ● ●
Building	● ● ● ● ● ● ● ●
Hardware	○ ○ ○ ○ ○ ○ ○ ○
Industry	● ● ● ● ● ● ● ●

Utilization x day



IDROWAND page 64



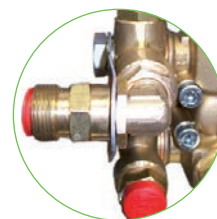
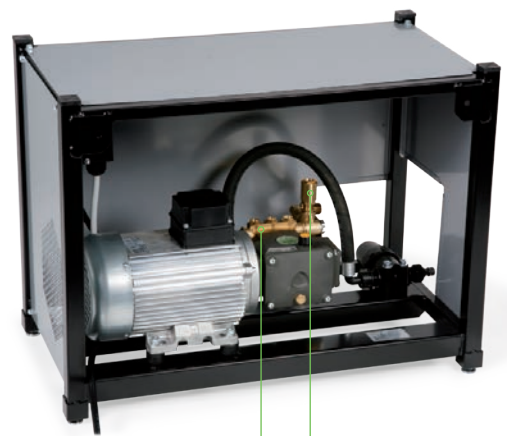
Sectors

Agriculture	○ ○ ○ ○ ○ ○ ○ ○
Automotive	● ● ● ● ● ● ● ●
Building	● ● ● ● ● ● ● ●
Hardware	○ ○ ○ ○ ○ ○ ○ ○
Industry	● ● ● ● ● ● ● ●

Utilization x day



ML CMP



Holding metal plate to protect By Pass valve from mechanical stress.



By Pass valve with pressure/flow regulation.



H.P. flexible hose 10 m
Code TBAP 25324



Handgrip
Code IPIP 40006



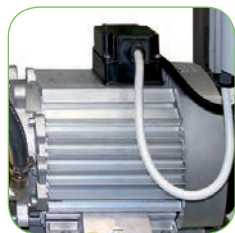
Lance Inox 70 cm
Code LCLC 40004



Nozzle for lance
Code UGLN 49990 (IDAF 40360)
Code UGLN 49991 (IDAF 40361)
Code UGLN 49987 (IDAF 40362)
Code UGLN 49986 (IDAF 40363)



New IPC H.P. plunger pump with brass head and three ceramic pistons.



4 pole asynchronous motor S1 class (continuous duty).



General switch with thermal protection.



High capacity inlet water filter.



Easy access to all components for an easy maintenance.

Technical characteristics

MLC-C

- General switch with thermal protection.
- REMOTE CONTROL: By Pass
- FILTER: High capacity inlet water filter.
- THERMOSTATIC VALVE to protect the pump from over temperature while left in By Pass phase.

- Epoxy polyester powder coated tubular frame.
- It can be fixed to the floor or a bad plate.
- Superposing structure up to 4 models without the need of other accessories.

Code	Model	Remote control	Pressure (bar)	Flow rate (l/h)	Max inlet water temperature (°C)	Voltage (Ph-V-Hz)	Absorbed power (kW)	Motor power (Hp)	RPM	Weight (Kg)	Dimensions (cm)
IDAF 40360	MLC-C 1310P M	By Pass	30÷130	600	50	1-230-50	3	3	1450	40	71x39x55
IDAF 40361	MLC-C 1813P T	By Pass	30÷180	800	50	3-400-50	5,1	5,5	2800	40	71x39x55
IDAF 40362	MLC-C 1915P T	By Pass	30÷190	900	50	3-400-50	6,5	6	1450	50	71x39x55
IDAF 40363	MLC-C 2017P T	By Pass	30÷200	1000	50	3-400-50	7,5	7,5	1450	50	71x39x55



Cold professional fixed pressure washers

ML



H.P. flexible hose 10 m
 Code TBAP 40010 (IDAF 40370 - IDAF 40371 - IDAF 40364
 IDAF 40365 - IDAF 40367 - IDAF 40368 - IDAF 40369)
 Code TBAP 40009 (IDAF 40366)
 Code TBAP 25324 (IDAF 40372)



Handgrip
 Code IPPR 89429 (IDAF 40370 - IDAF 40371 - IDAF 40364 - IDAF 40365
 IDAF 40367 - IDAF 40368 - IDAF 40369)
 Code LCPR 12976 (IDAF 40366)
 Code LCPR 12970 (IDAF 40372)



Extension Inox P70
 Code LCPR 12976 (IDAF 40370 - IDAF 40371 - IDAF 40364 IDAF
 40365 - IDAF 40366 - IDAF 40367 - IDAF 40368 - IDAF 40369)
 Code LCPR 12970 (IDAF 40372)



Nozzle for lance
 Code UGLN 49987 (IDAF 40370 - IDAF 40366)
 Code UGLN 02312 (IDAF 40371) - Code UGLN 49993 (IDAF 40372)
 Code UGLN 49997 (IDAF 40364) - Code UGLN 49995 (IDAF 40365)
 Code UGLN 75267 (IDAF 40367) - Code UGLN 02314 (IDAF 40368)
 Code UGLN 49994 (IDAF 40369)



1450 rpm crank type pumps.



Total stop control with delay.



Optional hose reel.



Optional inox hose reel (Code AVTB 39119).



Pressure gauge to monitor work pressure at all times.

Technical characteristics

ML-C - SML-C

- Crank type pump with ceramic pistons and forged brass head.
- Pump-motor connection with anti-vibration coupling.
- Continuous duty, four-pole electric motor with overload cut-out.
- Total stop control with delay.
- Provision for remote control (optional).
- High pressure detergent delivery with dosing from the machine.

- Electric control panel with IP 65 protection rating.
- Stainless steel frame. It can be fixed to the floor or a bedplate.
- High pressure detergent delivery with dosing from the machine
- Detergent tank available on request.

Code	Model	Remote control	Pressure (bar)	Flow rate (l/h)	Voltage (Ph-V-Hz)	Absorbed power (kW)	Motor (Hp)	RPM	Detergent tank (l)	Weight (Kg)	Dimensions (cm)
IDAF 40364	ML-C D1012Pi M	Total Stop D	100	720	3-400-50	3,2	3	1450	2x25 opt.	65	77x41x41
IDAF 40365	ML-C D1021Pi T	Total Stop D	100	1260	3-400-50	5,5	5,5	1450	2x25 opt.	72	77x41x41
IDAF 40366	ML-C D1515Pi T	Total Stop D	150	900	3-400-50	5,5	5,5	1450	2x25 opt.	84,5	77x41x41
IDAF 40367	ML-C D1521Pi T	Total Stop D	150	1260	3-400-50	8,5	7,5	1450	2x25 opt.	86	77x41x41
IDAF 40368	ML-C D1618Pi T	Total Stop D	160	1080	3-400-50	7,1	7,5	1450	2x25 opt.	88	77x41x41
IDAF 40369	ML-C D2015Pi T	Total Stop D	200	900	3-400-50	7,1	7,5	1450	2x25 opt.	87,5	77x41x41
IDAF 40370	SML-C D1030Pi T	Total Stop D	100	1800	3-400-50	7	7,5	1450	2x25 opt.	80	93x44x41
IDAF 40371	SML-C D1530Pi T	Total Stop D	150	1800	3-400-50	7,5	10	1450	2x25 opt.	125	93x44x41
IDAF 40372	SML-C D2021Pi T	Total Stop D	200	1260	3-400-50	9,4	12	1450	2x25 opt.	100	93x44x41

Max inlet water temperature: 50°C

Recommended optional accessories



Foam head
Code LCPR 39134



Lances for washing floors
Code LCLC 41140



Lance holder
Code KTRI 28935



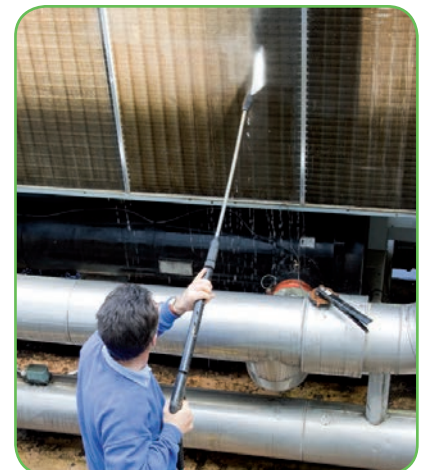
Hose reel kit
Code KTRI 37674



Wall fixing bracket
Code KTRI 39249 (ML)
Code KTRI 75462 (SML)

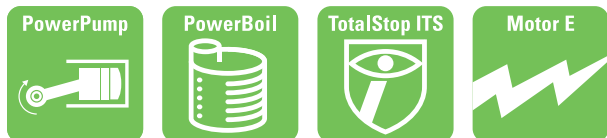


Desk support
Code KTRI 39250 (ML)
Code KTRI 75369 (SML)



Hot professional fixed pressure washers

IDROWAND - L



H.P. flexible hose 10 m
Code TBAP 40008
(IDAC 48036 - IDAC 48037 - IDAC 48038 - IDAC 48040)
Code TBAP 40009 (IDAC 48039)
Code TBAP 40010 (IDAC 48041)



Handgrip
Code IPPR 89429



Extension Inox P70
Code LCPR 12976



Nozzle for lance
Code UGLN 49993 (IDAC 48036 - IDAC 48037)
Code UGLN 49995 (IDAC 48038 - IDAC 48041)
Code UGLN 49987 (IDAC 48039)
Code UGLN 49997 (IDAC 48040)



CONTROL PANEL

- manometer
- steam tap
- detergent 1 flow regulator
- detergent 2 flow regulator



CONTROL PANEL

- on/off switch
- temperature regulator
- detergent selector
- power indicator
- burner function indicator
- burner shut-down indicator

Technical characteristics

- Crank type pump with three ceramic pistons and forged brass head.
- Pump-motor connection with anti-vibration coupling.
- Continuous duty, 1450 rpm, four-pole electric motor protected by overload cut-out.
- "ICS" Intelligent control safety system (intelligent total stop), microleak detection and total power down after 20' disuse.
- Burner control device shuts down operation if there is no pressure. Flame control device.
- Stainless steel boiler with >89% efficiency.
- 40 mt steel coil. In D1012Pi M and D1615Pi T models the coil is 30 mt long.
- Pressure and steam phase regulation.
- Provision for remote control (optional).
- Thermostat for selecting water outlet temperature.
- High pressure detergent delivery, controlled by 2 solenoid valves at three ways, with the possibility to use alternatively two different detergents.
- Water tank with float control and filter.
- Anti-scale system with independent pump.
- Pilot lights indicating the machine and the burner functioning, plus the flame control.
- Enamelled steel base in epoxy-polyester, satiny stainless steel covers and structures.
- Possibility to be fixed to a wall, or upon an enamelled steel base.
- Hose reel kit available (optional) to be fixed to the machine.
- Pre-wired remote control device (optional).

Code	Model	Remote control	Pressure (bar)	Flow rate (l/h)	Outgoing water temperature (l)	Voltage (Ph-V-Hz)	Absorbed power (kW)	Motor (Hp)	RPM	Weight (Kg)	Dimensions (cm)
IDAC 48036	IWD-H D1012Pi M	Total Stop ITS	100	720	30÷120	1-230-50	3,2	3	1450	170	122x59x73
IDAC 48037	IWD-H D1615Pi T	Total Stop ITS	160	900	30÷120	3-400-50	6,5	5,5	1450	170	122x59x73
IDAC 48038	IWD-H D1618Pi T	Total Stop ITS	165	1080	30÷115	3-400-50	7,2	7,5	1450	170	122x59x73
IDAC 48039	IWD-H D2015Pi T	Total Stop ITS	200	900	30÷120	3-400-50	7,2	7,5	1450	170	122x59x73
IDAC 48040	IWD-H D1521Pi T	Total Stop ITS	150	1260	30÷115	3-400-50	7,2	7,5	1450	172	122x59x73
IDAC 48041	IWD-H D2021Pi T	Total Stop ITS	200	1260	30÷145	3-400-50	9,5	10	1450	184	131x59x73

For all models, detergent tanks of 2x25 litres (optional).

Recommended optional accessories





IPC

IPC Integrated Professional Cleaning

Ip Cleaning S.p.A.

Viale Treviso, 63 - 30026 Summaga di Portogruaro - VENICE - ITALY

Tel. ++39 0421 205511 (r.a.) - Fax ++39 0421 204227

www.ipcleaning.com - info@ipcleaning.com